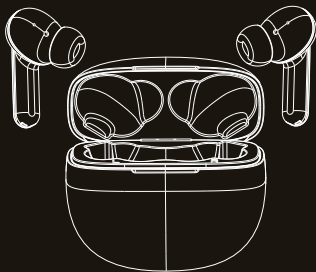


Kite Zeal

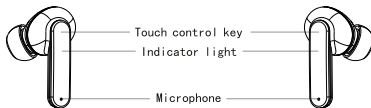
True Wireless Earbuds



USER MANUAL

Left earphone

Right earphone



Specifications:

Model: Kite Zeal

Bluetooth Version: 5.3

Speaker Driver: 10 mm

Earbuds Battery: 40 mAh*2

Charging Case Battery: 300 mAh

Frequency: 20Hz – 20,000 HZ

Impedance: 16Ω

Wireless Range: 10m

Charging Voltage: DC 5V

Charging Time: 1.5 H

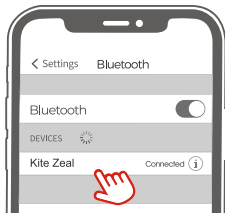
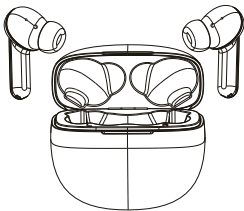
Water Resistance: IPX4

Music Play Time: 5H

Getting Started:

Pairing and connecting

1. The Earbuds automatically pair to each other after taking them out of the charging case (after 1st successful connection).
2. The blue light is on for 2 seconds, then it turns to red and blue lights flashing alternatively.
3. Select “Kite Zeal” from the device list in your Bluetooth list.



Controls:



Play / Pause



Previous Song / Answer Call / End Call



Volume Down



3's Activate Siri / Voice Assistant / Reject Call



5's Power On / Off



Play / Pause



Next Song / Answer Call / End Call



Volume Up



3's Activate Siri / Voice Assistant/ Reject Call



5's Power On / Off

Turning On and Turning Off:

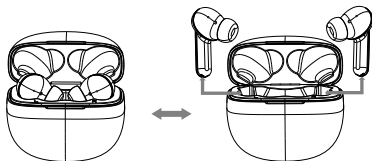
Turn On:

1. Open the cover of the charging box and take out the earbuds. The earbuds will power on automatically.

Turn Off:

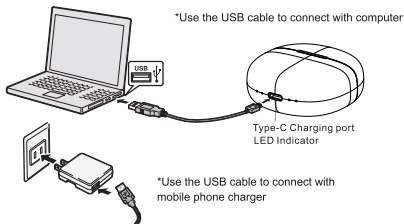
1. Place the earbuds in the charging compartment and close the cover of the charging case.
2. The earbuds will turn off automatically.

Charge



*Putting the earphone in and out of the battery compartment

Charge



Note: Please charge the earbuds and the charging case at least once every 3 months when not in use for a long time. Otherwise, the battery may be damaged and cannot be used.

Earbuds Charging	When the earbuds are placed into the charging case, they turn off automatically and start charging (when only one earphone is placed in the charging case, the other will not turn off). The Red Light will stay on and change to blue when it is fully charged (The light turns off after 60 seconds)
Charging Case Charging	A. LED 1, LED 2, LED 3 and LED 4 are successively turned on (blue light). The four blue lights are on after being fully charged. When the charging case is disconnected, the power indicator light will go out after staying on for 5 seconds.
Earbuds Low Battery	When the battery is low, there will be a prompt of Low Battery tone and the Red light flashes twice in 30 seconds.

Warranty and Support:

Kite Zeal comes with a 1 year Brand Warranty from the original date of purchase. You need to register the device within 10 days from the original date of purchase in our official website to be eligible to avail the warranty.

For any queries or support, you can contact below:

Email ID: support@kitelifestyle.com

Website: www.kitelifestyle.com

Follow us on :



kite.flyhigh



Kite_FlyHigh



kite.flyhigh



www.kitelifestyle.com

RoHS
Compliant

